

 **revcon**[™] minimally invasive
screw system

Surgical Technique Guide

Sterile System with MIBS CoPilot[™] Shift + Targeting Guide



Table of Contents

3	Revcon™ Screw System Features
4	Surgical Technique - Distal First Metatarsal Osteotomy
4	Step 1: Identifying Landmarks + Incisions
4	Step 2: Dissection + Soft Tissue Release
5	Step 3: Midshaft Osteotomy
6	Step 4: Shift Preparation + Mock Reduction
7	Step 5: Guide Clamp Application + Attaching Guide Rail
8	Step 6: Lateral Alignment + Metatarsal Shifter Application
	Step 7: Setting the Starting Point
9	Step 8: Securing the Starting Point
	Step 9: Setting the Sagittal Plane Alignment
10	Step 10: Transverse Plane Alignment
	Step 11: Frontal Plane Correction
11	Step 12: K-wire Advancement Through Lateral Cortex
	Step 13: Final K-wire Placement
12	Step 14: Implant Selection
13	Step 15: Implant Selection
14	Step 16: Guide Removal / Final Implant Confirmation
	Step 17: NervPreserv™ Medial Ledge Resection
15	Surgical Technique - Akin Osteotomy
	Step 1: Identifying Landmarks + Incision
	Step 2: Osteotomy
	Step 3: K-wire Placement
	Step 4: Revcon™ Screw Fixation
16	Surgical Technique - Closure + Dressings
	Step 1: Closure
	Step 2: Dressings
17	Ordering Information - Revcon™ Screws
18	Ordering Information - Revcon™ Instrument Tray



Revcon™ Screw System

Patented next-evolution design for minimally invasive bunion surgery (MIBS).

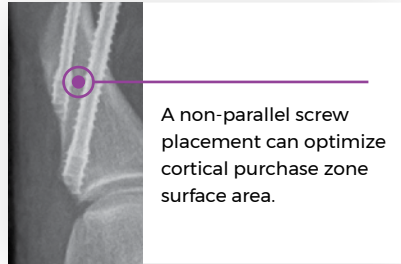
Reverse conical shape

Increases thread surface area for bone engagement.



Beveled 42° and 50° angles

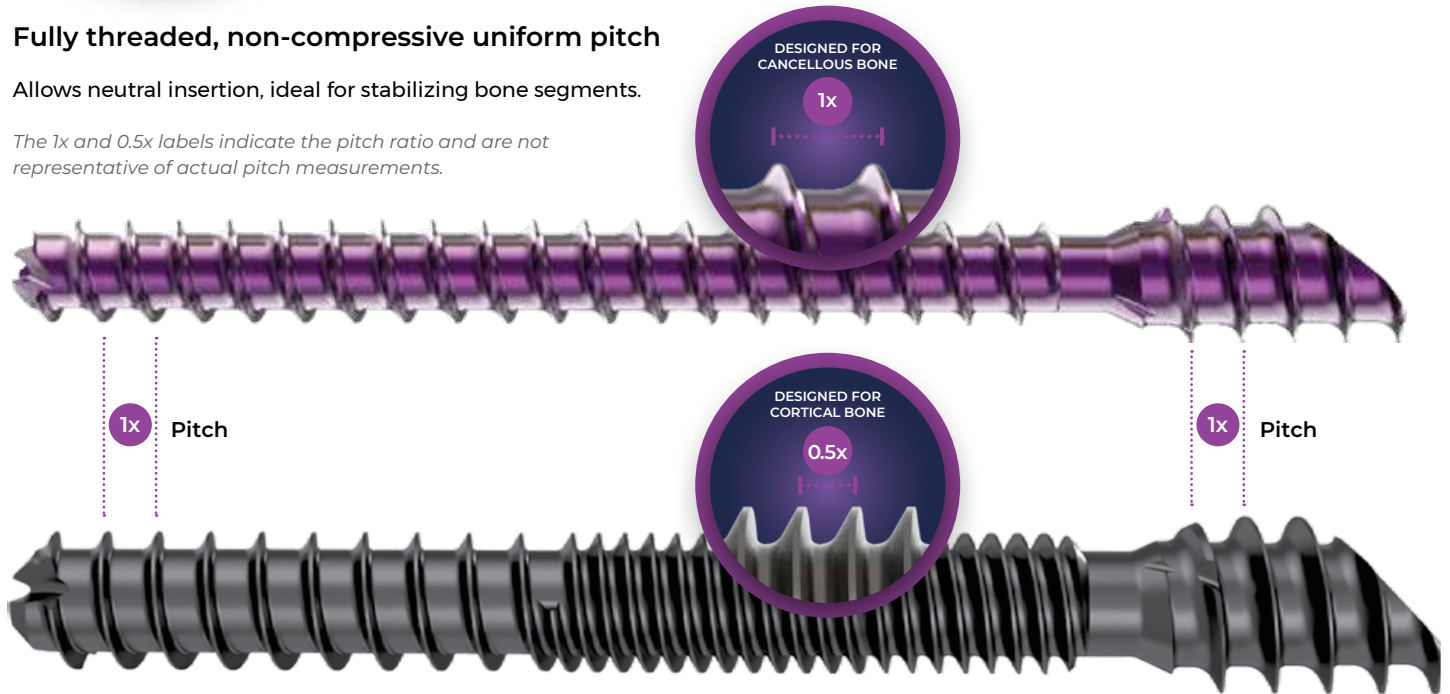
Facilitates divergent screw positioning for capture of the cortical purchase zone (CPZ) and cancellous anchor zone (CAZ).



Fully threaded, non-compressive uniform pitch

Allows neutral insertion, ideal for stabilizing bone segments.

The 1x and 0.5x labels indicate the pitch ratio and are not representative of actual pitch measurements.



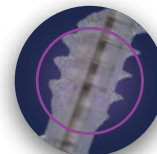
From end to end, the Revcon™ screw is designed for smooth, quick percutaneous insertion, bone purchase, and strength.



Hexagonal recess



Forward cutting flutes



Cannulated design

End-to-end features are depicted here using Revcon™ Neutra screw for optimal visibility, but are consistent across the Revcon™ Neutra and Revcon™ Anchor screw lines.



Surgical Technique

Distal First Metatarsal Osteotomy

1 Step 1: Identifying Landmarks + Incisions

Under fluoroscopic guidance and using a the straight elevator for triangulation, mark the location for the distal incisions.

The distal incision location is medial at the first metatarsal neck, just proximal to the flare of the medial eminence (figure 1).

Bluntly dissect soft tissues down to the bone. Care is taken to avoid any neurovascular structures related to the incision placement.



Figure 1: Distal incision location.

2 Step 2: Dissection + Soft Tissue Release

The straight elevator is used to create a plane between the bone of the first metatarsal neck and the dorsal, plantar, and medial soft tissue structures (figure 2). Avoid aggressive plantar dissection as this may increase risk for injury to the blood supply to the first metatarsal head.

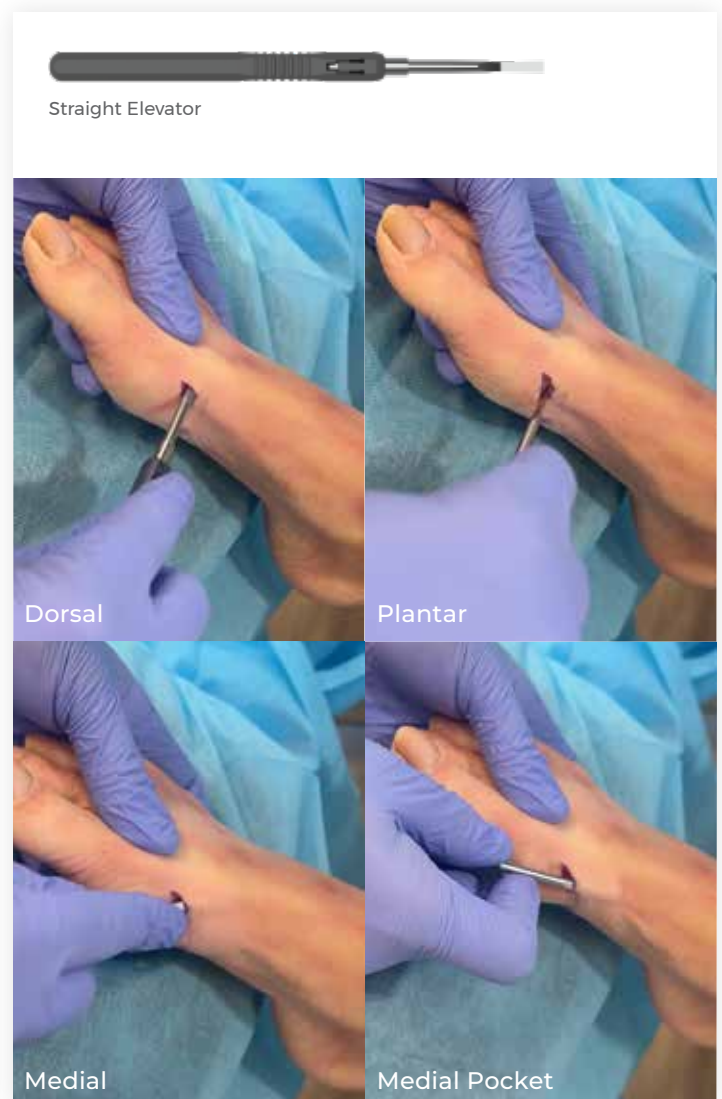


Figure 2: Periosteum release with straight elevator.

3

Step 3: Midshaft Osteotomy

Perform the Transveron™ osteotomy using a 2.0mm x 16mm Shannon bur under irrigation and fluoroscopic guidance (figures 3 and 4).

Depending on the surgeon's goal for correction, orienting the osteotomy distally will lengthen the first metatarsal whereas orienting the osteotomy proximal will shorten it.



Figure 3: The Transveron™ osteotomy may be placed distally or proximally in the apical transition zone of the first metatarsal.

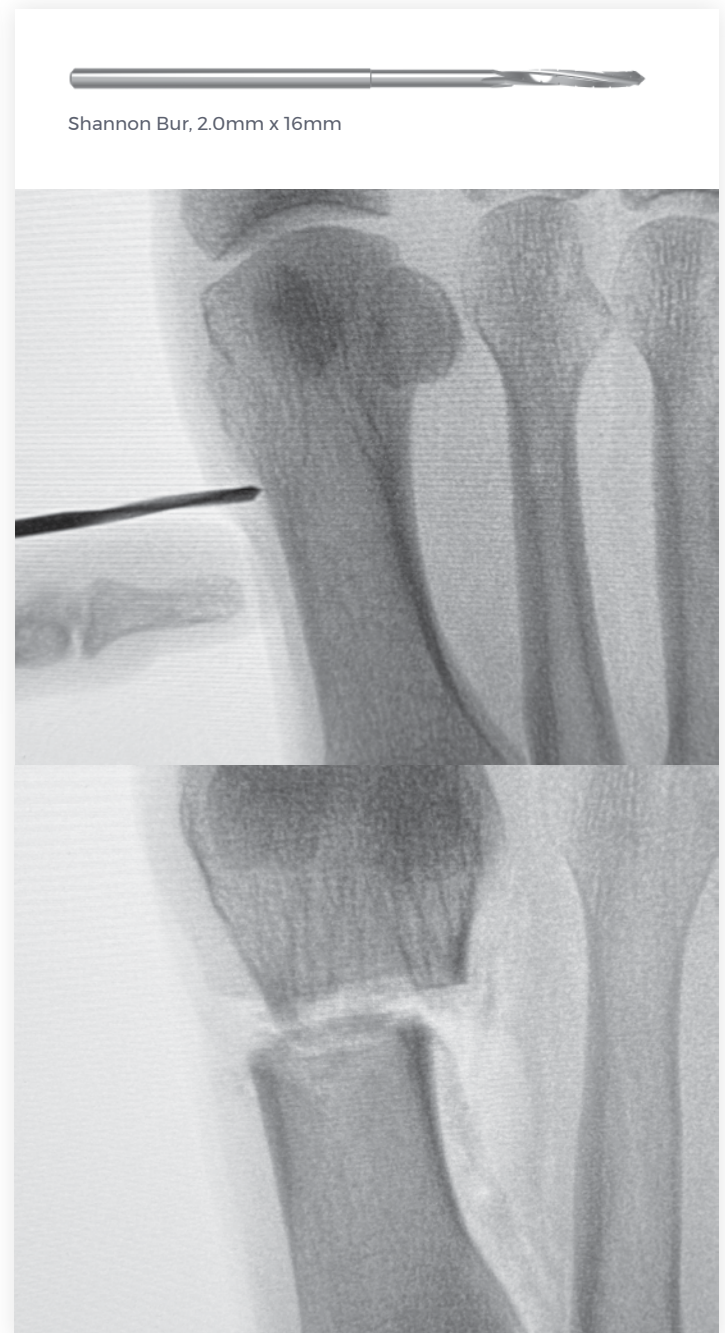


Figure 4: Starting (top); complete osteotomy (bottom).

4

Step 4: Shift Preparation + Mock Reduction

After the osteotomy is verified to be complete, place the curved periosteal elevator across the osteotomy site to mobilize the lateral soft tissue allowing for translation (figure 5). Perform multiple times if necessary to achieve desired mobility.

Perform mock reduction by placing the straight periosteal elevator into the metatarsal shaft. Lever distal and lateral under fluoroscopy (figure 6). This will give you a future reference for the target final shift location for the patient. Use the instruments as shown in figures 5 and 6 to avoid plantarflexing the metatarsal head.



Curved Elevator



Straight Elevator

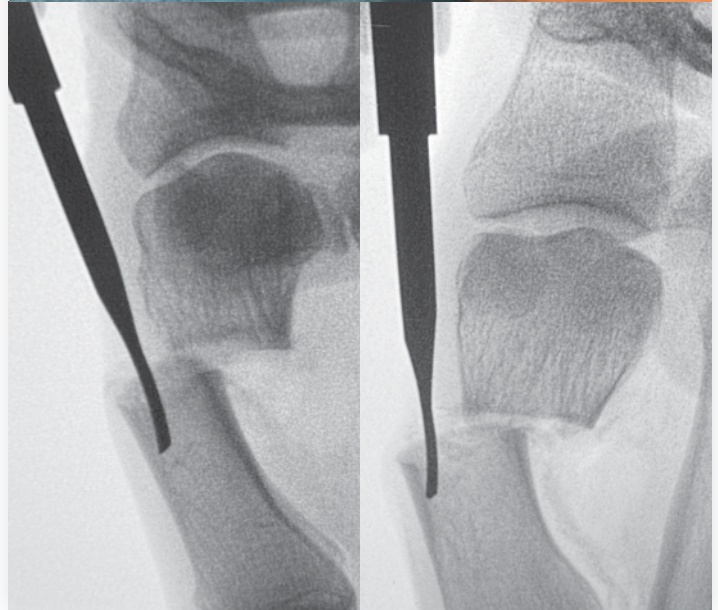
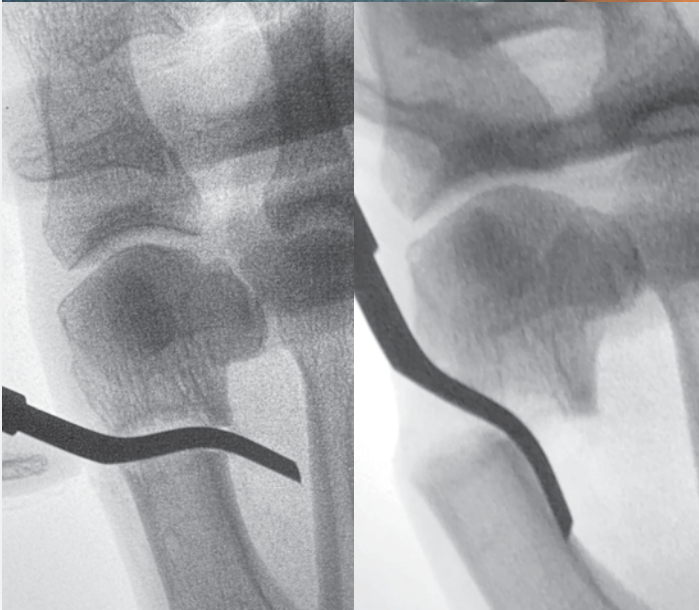


Figure 5: Levering the curved elevator both distally and medially will loosen the soft tissues surrounding the metatarsal.

Figure 6: Levering the straight elevator will give you a reference target for the final shift location.

5 Step 5: Guide Clamp Application + Attaching Guide Rail

Use the straight elevator to expose the IM canal. Insert the metal end of the clamp, placing the straight leg IM and the curved leg subcutaneous and extramedullary with the medial cortex in between the legs. Confirm with AP fluoroscopy that the medial cortex is between the two legs of the clamp.

Advance the clamp proximally until the curved leg is 3-5mm proximal to the osteotomy site (figure 7). **Do not tighten the clamp at this time.**

Snap the preassembled guide rail and K-wire targeter into the clamp as shown in figure 8.

The guide is marked to show which side faces up based on right or left patient anatomy. The white knob on the guide should always be proximal (figure 8). **Do not tighten the clamp at this time.**



Figure 7: 3-5mm is the optimal depth to maintain the stability of the clamp throughout the procedure and remain a safe distance from the osteotomy site.

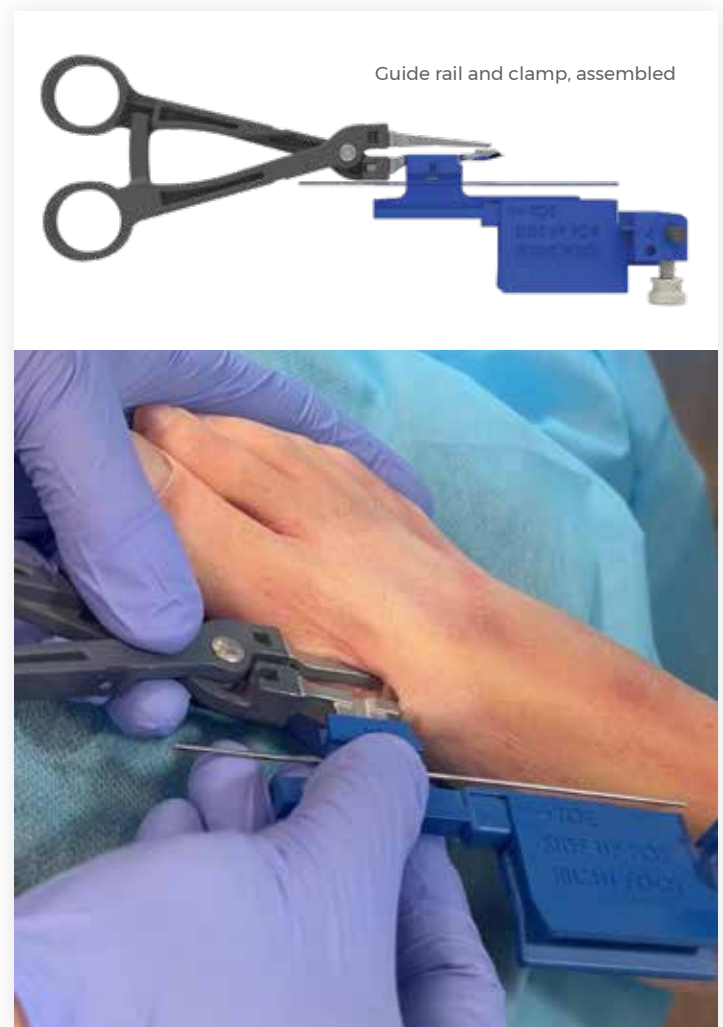


Figure 8: Correct guide rail orientation.

6

Step 6: Lateral Alignment + Metatarsal Shifter Application

Position the fluoroscopy for a lateral view. **Ensure that you are viewing the foot in a true lateral.**

While maintaining the true lateral view, adjust the clamp under live fluoroscopy to ensure the clamp is in the middle of the IM canal and rotated so that both windows on the curved leg of the clamp are visible under fluoroscopy. Ensure the external K-wire trajectory is parallel to the center of the IM canal and central to the apex at the tip of the clamp. Once the position is confirmed, tighten the clamp to hold the guide securely in place (figure 9)



Figure 9: Foot aligned in true lateral (top); foot positioned in true lateral with guide misaligned (middle); both foot and guide in true lateral with trajectory in the middle of the IM canal and windows visible (bottom).

7

Step 7: Setting the Starting Point

Place the blunt tip wire in the dorsal hole in the proximal end of the wire targeter. Place a 1.4mm K-wire in the central hole of the wire positioner, directly underneath the blunt wire. Under AP fluoroscopy, move the guide to the starting position at the medial flare of the metatarsal base and rotate the K-wire into the desired trajectory.

Note: Trajectory may be adjusted later in the case after shifting the metatarsal head, if needed.

Advance the central K-wire percutaneously to the starting position.

From medial, place a securing K-wire in the center of the medial slot into the navicular for added stability (figure 10).

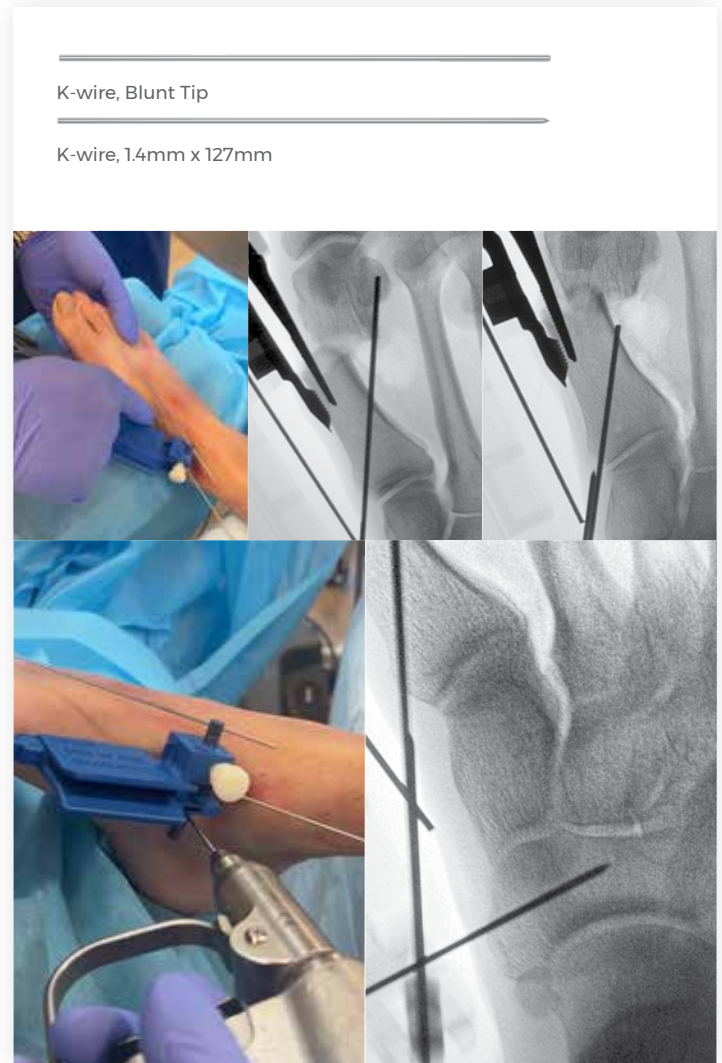


Figure 10: Starting point established and navicular wire applied.

8

Step 8: Securing the Starting Point

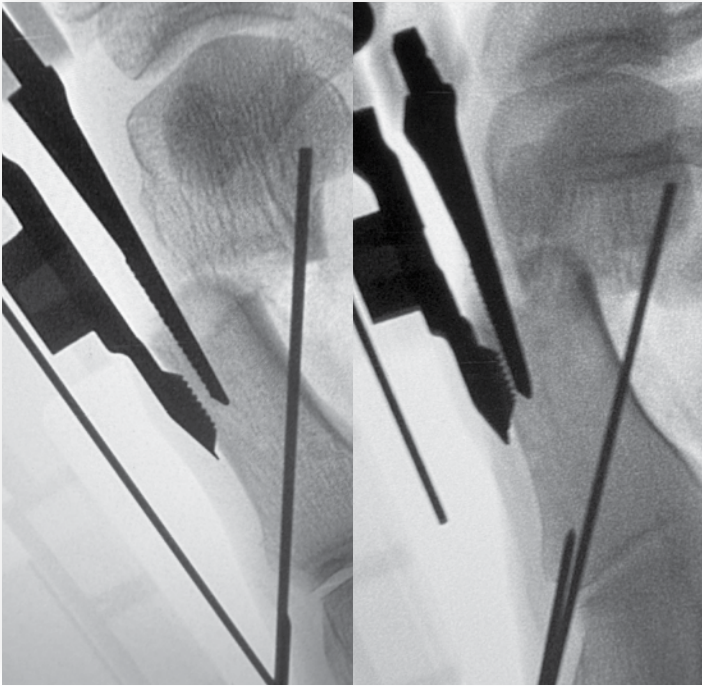


Figure 11: Advancing the K-wire into the medial flare.

Place the wire driver over the central K-wire and advance the tip into the cortex of the medial flare to maintain starting point for later in the case (figure 11).

Make the proximal incision around the K-wire and bluntly dissect the soft tissue (figure 12)

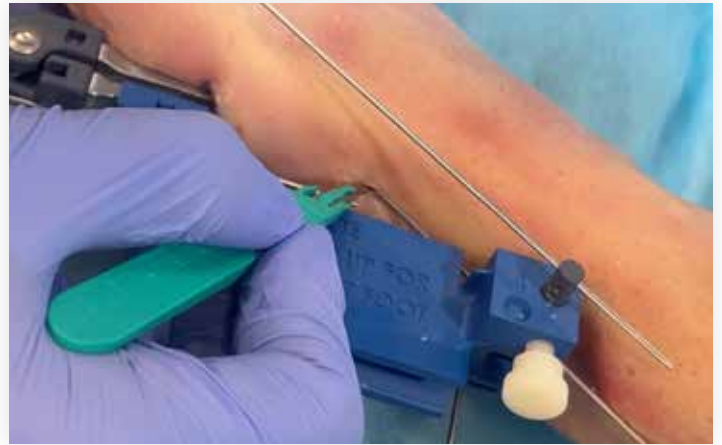


Figure 12: Proximal incision location.

9

Step 9: Sagittal Plane Alignment

Slide the metatarsal shifter distal to proximal over the distal end of the guide rail. The “C” shape should always face lateral.

Unscrew the medial screw and advance the 1.6mm K-wire to the skin as shown. Under AP fluoroscopy, adjust the

shifter until the wire is in the center of the metatarsal head.

Hold the plantar paddle steady and twist the plantar knob until the paddle is taught and desired sagittal alignment is achieved. This will support sagittal alignment (figure 13).

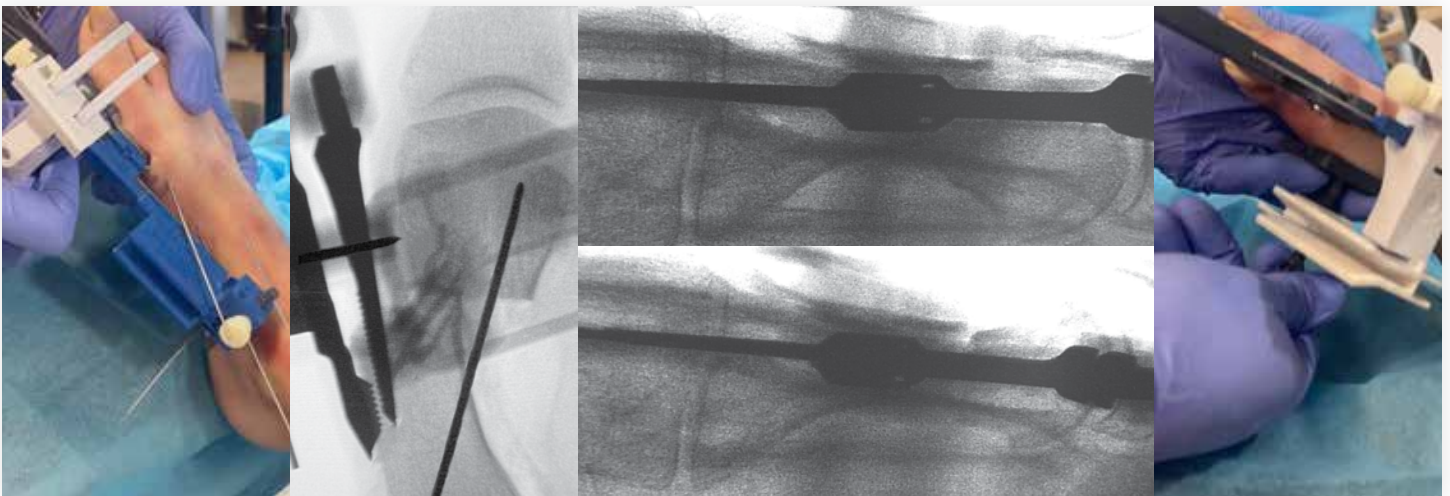


Figure 13: *Left to right*, Applying the metatarsal shifter distal to proximal, shifter aligned to the center of the metatarsal head, manual setting the sagittal plane, sagittal support applied.

10 Step 10: Transverse Plane Alignment

Advance the 1.6mm K-wire into the metatarsal head, stopping when the line is at the skin. Apply a hemostat at the line and against the skin to form a buttress.

Slide the medial screw over the 1.6mm K-wire and tighten the screw until the desired shift is achieved (figure 14).

Note: Thumb screw must be tightened several rotations to contact the blunt end of the K-wire. Once the thumb screw is in contact with the K-wire, shifting will occur.

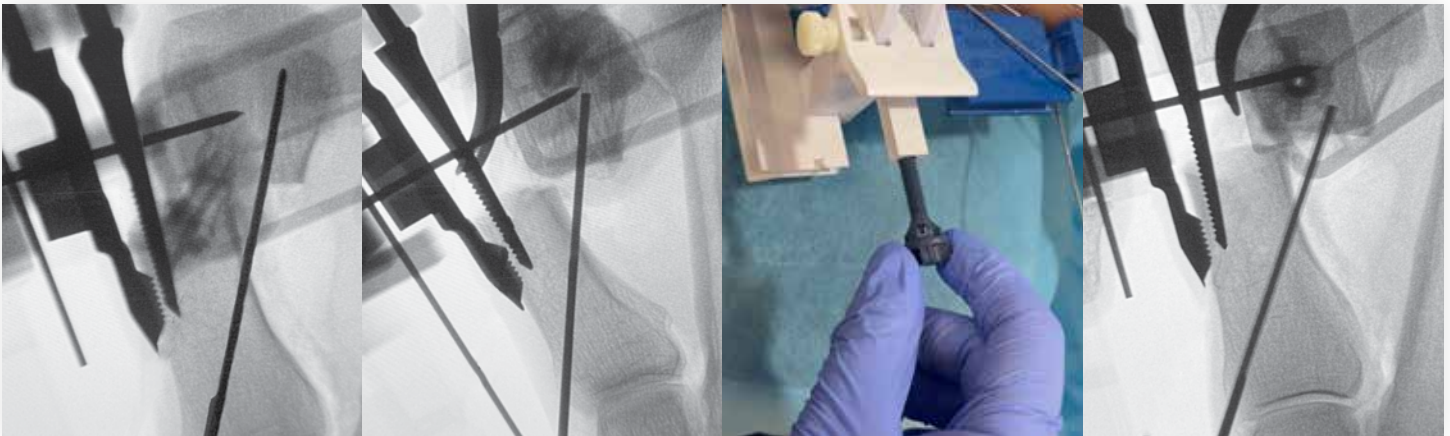


Figure 14: Medial K-wire inserted; clamp buttress applied; medial screw tightened to achieve desired shift

11 Step 11: Frontal Plane Correction

If sesamoid rotation is necessary, loosen the screw securing the paddle to the dorsal arc. Advance the paddle up the arc under fluoroscopy to perform sesamoid rotation .

When desired location is achieved, re-tighten the screw to hold placement (figure 15).

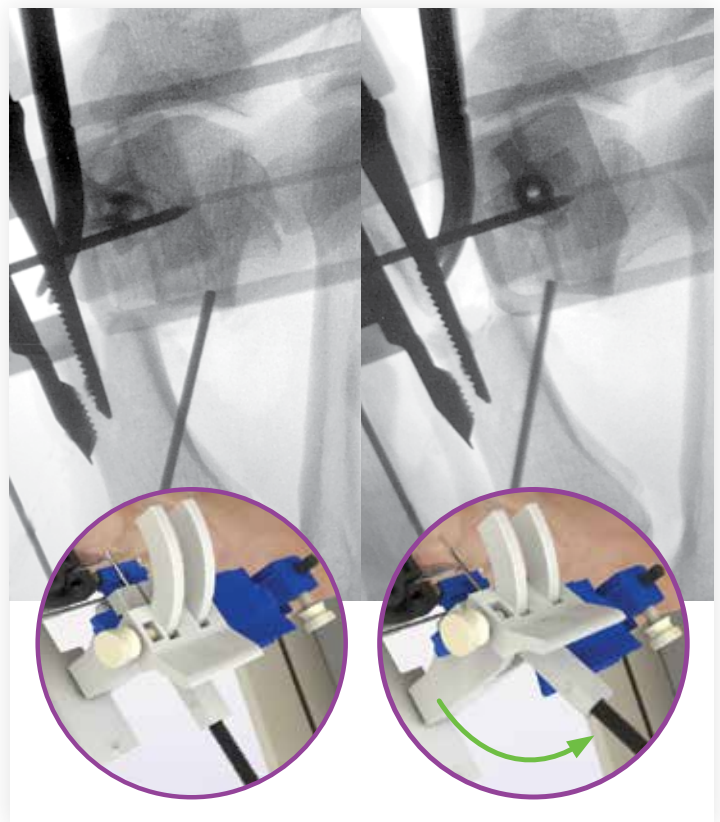


Figure 15: Advancing and securing desired frontal plane correction.

12 Step 12: K-wire Advancement Through Lateral Cortex

Under AP fluoroscopy, reassess the post-shift K-wire trajectory. Adjust trajectory as needed to target the wire from the medial flare to the lateral third of the metatarsal head. The alignment should target a minimum of 1cm proximal to the osteotomy on the lateral wall of the proximal metatarsal.

Secure the trajectory by tightening the medial knob. Advance the K-wire up to the lateral cortex and stop to confirm trajectory.

To advance through the lateral cortex, hold steady pressure and let the tip of the K-wire spin on the lateral cortex until it successfully penetrates through the cortex. **Do not apply forward pressure to prevent skiving** (figure 16).

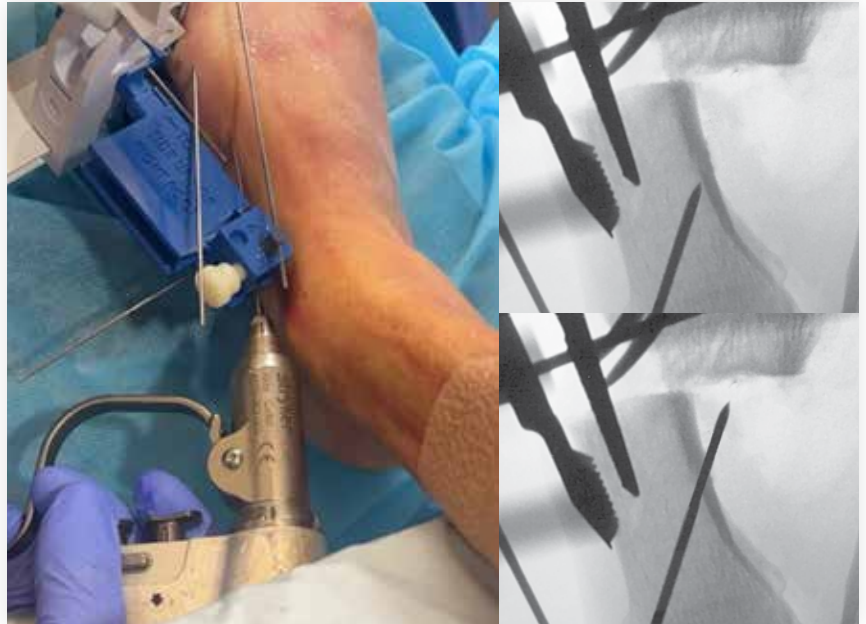


Figure 16: K-wire advanced to the lateral cortex, then through the lateral cortex.

13 Step 13: Final K-wire Placement

Remove the navicular wire and blunt K-wire from the dorsal hole. Squeeze the tabs of the wire targeter and slide it proximally and medial over the inserted K-wire to expose more working length of the K-wire.

Advance the K-wire into the metatarsal head, stopping approximately 4mm from the MTP joint (figure 17).

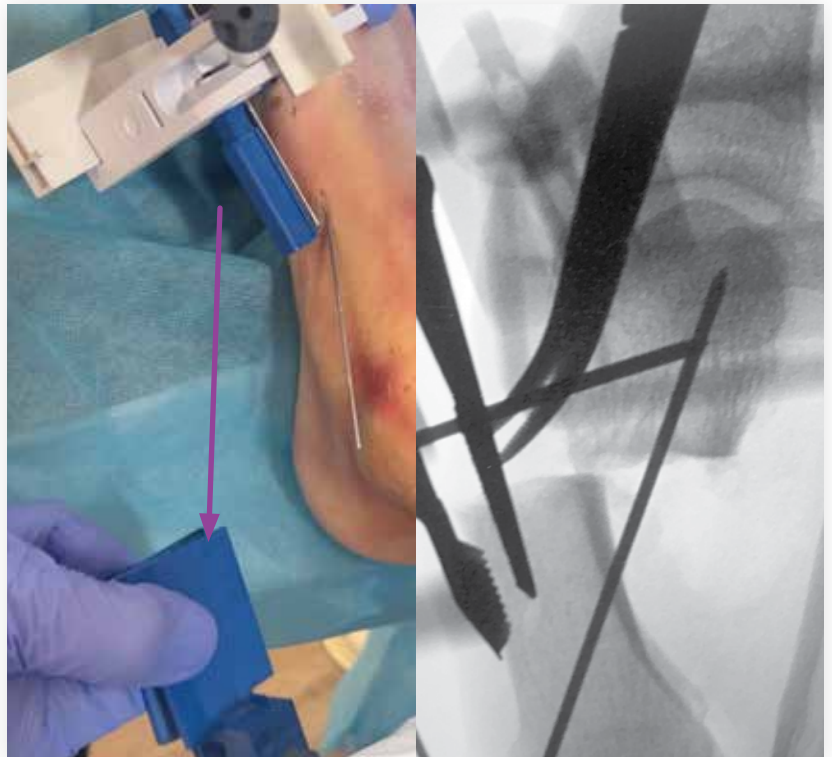


Figure 17: Removal of wire targeter.

14

Step 14: Implant Selection

Measure the 4.0mm Revcon™ Anchor screw length by placing the depth gauge over the K-wire and advancing it to the bone (figure 18).

Note: If the K-wire is advanced near the MTP joint, deduct 4mm from the measurement to ensure the implant is safely away from the joint. The 3.0mm Neutra screws are available if a second screw is desired.

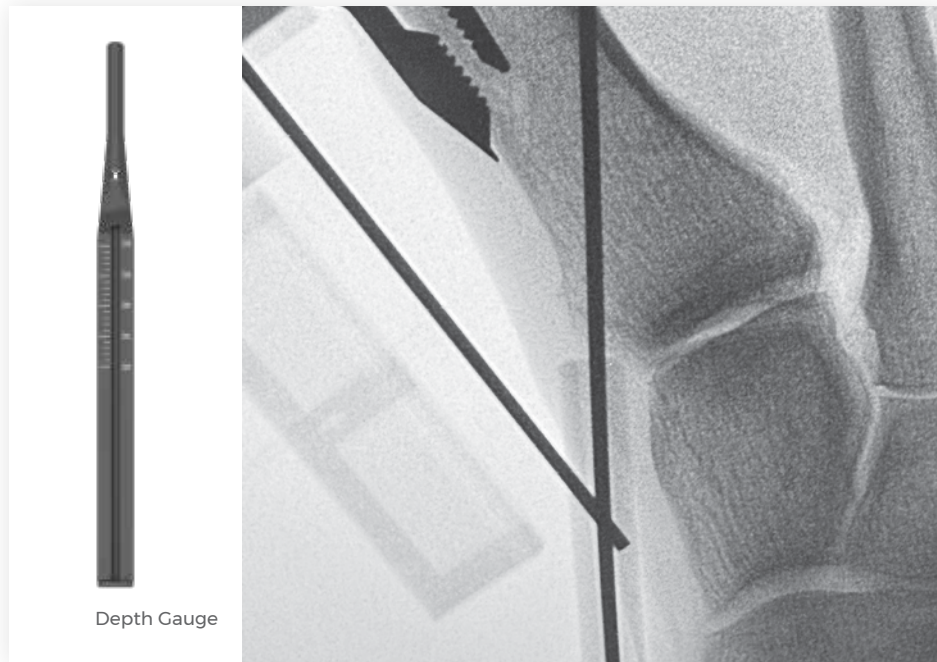


Figure 18: Depth gauge advanced to the bone.

revcon™ neutra



revcon™ anchor



Design Feature	Revcon™ Neutra Ø3.0mm	Revcon™ Anchor Ø4.0mm
Hex Driver	2.0mm	2.5mm
Guide Wire	0.9mm	1.4mm
Drill	2.2mm	3.0mm
Lengths	20mm - 30mm, 36mm - 48mm	46mm - 60 mm

Place tissue protector over the K-wire and down to the bone. Use the 3.0mm cannulated drill to drill over the K-wire to prepare for implant insertion (figure 19).

Prior to removing the drill bit, slide the wire pusher into the back of the cannulated drill and advance until you feel it engage the inside of the cannulated drill bit. Provide counter pressure on the wire pusher handle while removing the drill bit. This will ensure that the K-wire stays in place while the drill is being removed.

Load the 4.0mm Revcon™ Anchor screw onto the 2.5mm hex driver, with the flat side of the driver aligned with the beveled side of the screw. This provides a visual reference of the beveled head direction when the implant is advanced beneath the skin. Advance the screw manually using the handle or using low speed power. When fully implanted the beveled side of the screw should face medial. **Advancing the screw using high speed power is not recommended.**

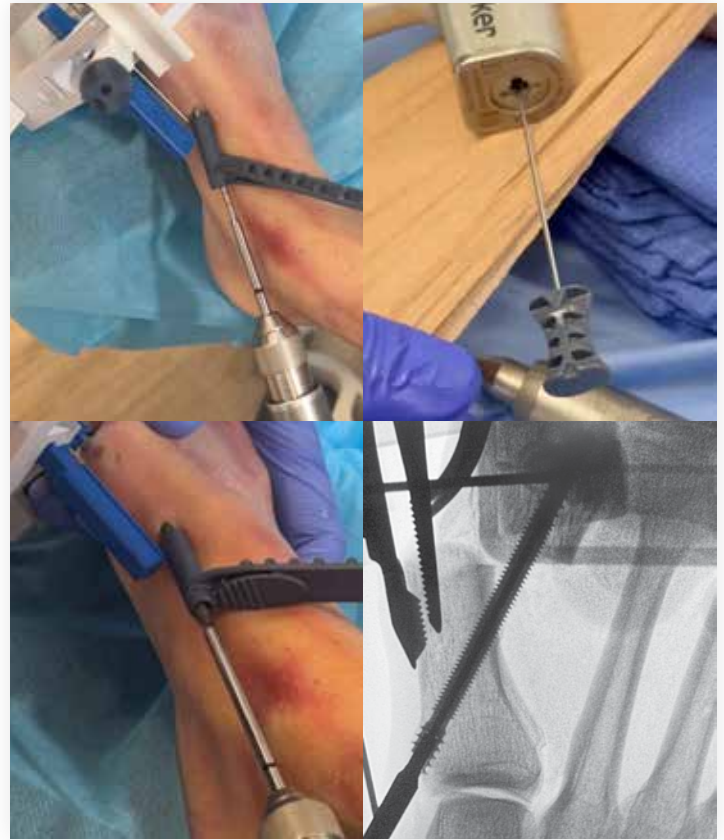


Figure 19: Drilling over 1.4mm K-wire; wire pusher inserted; screw advanced.

Anchor Ø4.0mm



Axial Handle, Cannulated, Ratcheting



Wire Pusher



Drill, 3.0mm

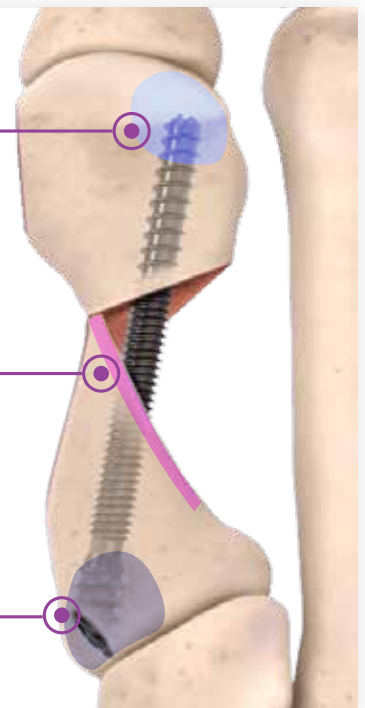


Hex Driver, 2.5mm

Docking Engagement Zone (DEZ)

Cortical Purchase Zone (CPZ)

Cancellous Anchor Zone (CAZ)



The Revcon™ Anchor screw instrumentation (left); fixation using the Revcon™ Anchor screw, which is design-optimized for single screw fixation (right).

The Revcon™ Screw System is designed for capture of cortical and cancellous bone.

16 Step 16: Guide Removal / Final Implant Confirmation

Remove the medial thumb screw from the metatarsal shifter and remove 1.6mm K-wire from the metatarsal head. Loosen the clamp to remove guide (figure 20).

Assess final implant under fluoroscopy in both the AP and lateral views (figure 20).

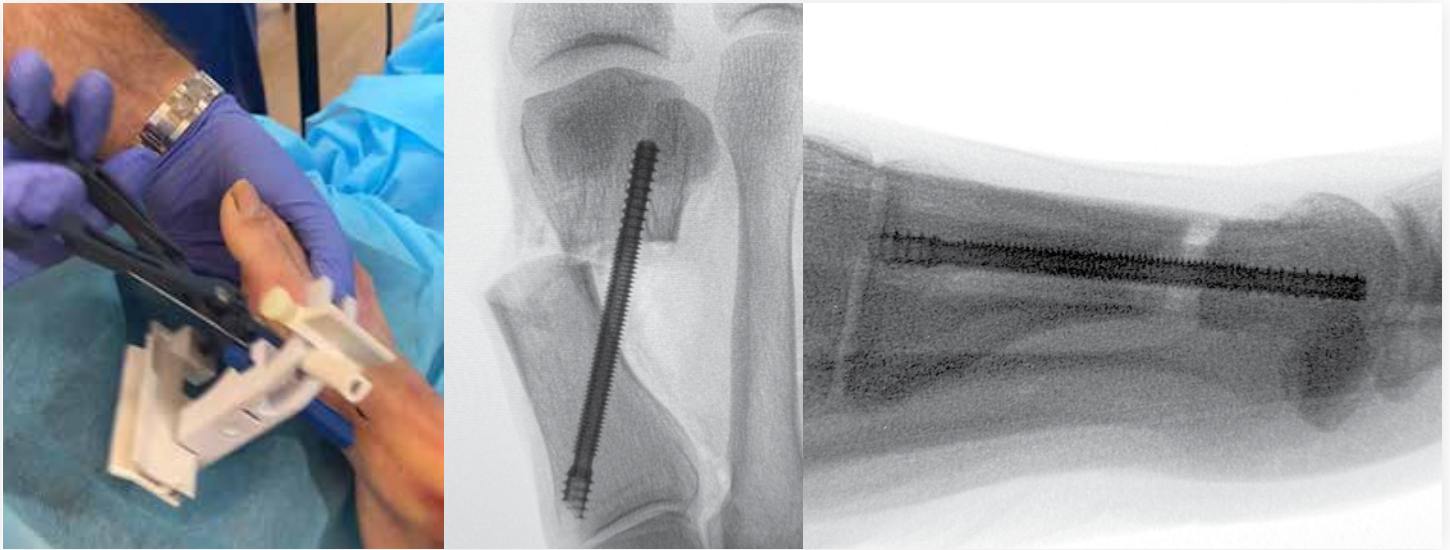


Figure 20: K-wire removed from distal fragment and clamp loosened for removal (left); Final implant placement (middle, right).

17 Step 17: NervPreserv™ Medial Ledge Resection

Use the 3.1mm x 13mm wedge bur to perform NervPreserv™ medial ledge resection as shown in training. Remove resected medial ledge fragment through the distal incision as shown in figure 21.

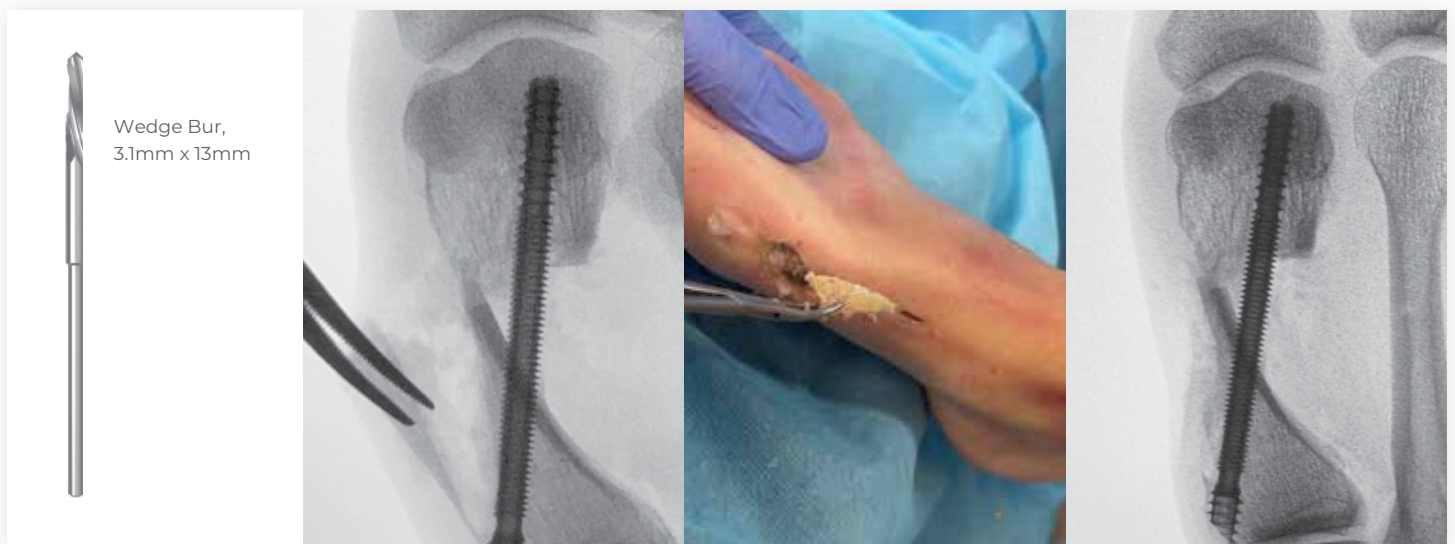


Figure 21: Resected medial ledge and final implant placement.



Surgical Technique

Akin Osteotomy

1 Step 1: Identifying landmarks + Incision

After the distal first metatarsal osteotomy procedure is completed there may be residual hallux interphalangeus deformity that the surgeon may deem to correct with an Akin osteotomy. The Akin procedure can also be performed as an independent procedure for isolated hallux interphalangeus.

Under fluoroscopic guidance and using a metallic instrument for triangulation, the medial proximal metaphyseal-diaphyseal junction should be marked out. A small longitudinal incision measuring approximately 2-3mm is made directly over this area and carried down deep to the bone. Care is taken to avoid the dorsomedial cutaneous nerve. The periosteal elevator is used to create a plane between the bone and dorsal extensor tendon complex and plantar flexor complex.

2 Step 2: Osteotomy

The osteotomy can be performed with a rotary shannon-type burr or a saw, under irrigation. A Shannon burr has the advantage of removing bone with cutting allowing for a wedge to be created. The osteotomy should be performed under fluoroscopic guidance and irrigation. The osteotomy can be transverse or angled distal medial to proximal plantar depending on surgeon preference. Perform the osteotomy from medial to lateral and dorsal to plantar, and the lateral cortex can remain intact or broken for additional correction.

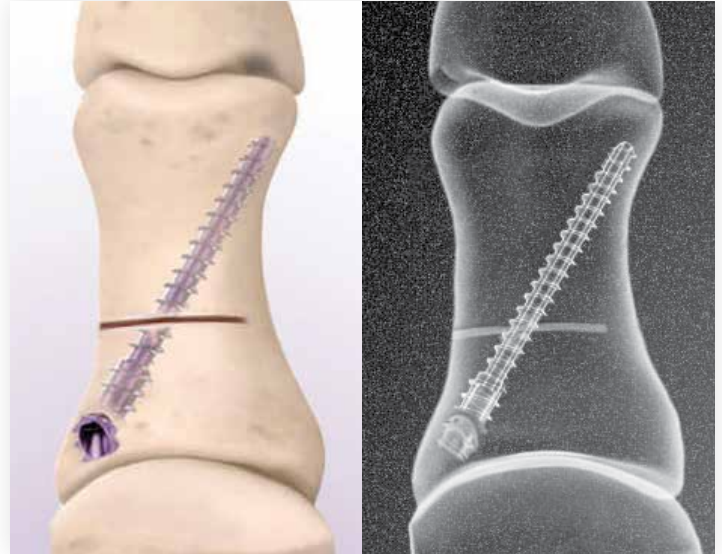


Figure 22: Akin osteotomy and 3.0mm screw placement.

3 Step 3: K-wire Placement

The Akin osteotomy is fixated with a 3.0mm Revcon™ screw. Percutaneously place a 0.9mm K-wire from the medial base of the proximal phalanx to the distal lateral cortex under fluoroscopic guidance. Once the position of the correction is confirmed on AP and lateral fluoroscopic views, the depth gauge is used to measure off of the guide wire. For added security of the K-wire during over drilling, it can be advanced laterally through the skin and clamped with a hemostat.

4 Step 4: Revcon™ Screw Fixation

Drill over the 0.9mm K-wire with the 2.2mm cannulated drill for the 3.0mm Revcon™ screw. Place the 3.0mm Recon™ screw over the K-wire. The head of the screw should be flush with the medial cortex of the proximal phalanx base. Remove the K-wire (figure 22).



Surgical Technique

Closure + Dressings

1 Step 1: Closure

After irrigation, incisions are closed with sutures or steri-strips.

2 Step 2: Dressings

A non-adherent dressing should be placed over the incisions, followed by 4x4 gauze and 4-inch conforming bandage. The hallux should be splinted rectus. A cohesive bandage or ACE wrapped on top.



Revcon™ Screw System

Ordering Information

revcon™ neutra



Length	Revcon™ Neutra Ø3.0mm	Qty.
20mm	RSN3020-S	3
22mm	RSN3022-S	3
24mm	RSN3024-S	3
26mm	RSN3026-S	3
28mm	RSN3028-S	3
30mm	RSN3030-S	3
36mm	RSN3036-S	2
38mm	RSN3038-S	2
40mm	RSN3040-S	2
42mm	RSN3042-S	2
44mm	RSN3044-S	2
46mm	RSN3046-S	2
48mm	RSN3048-S	2

revcon™ anchor



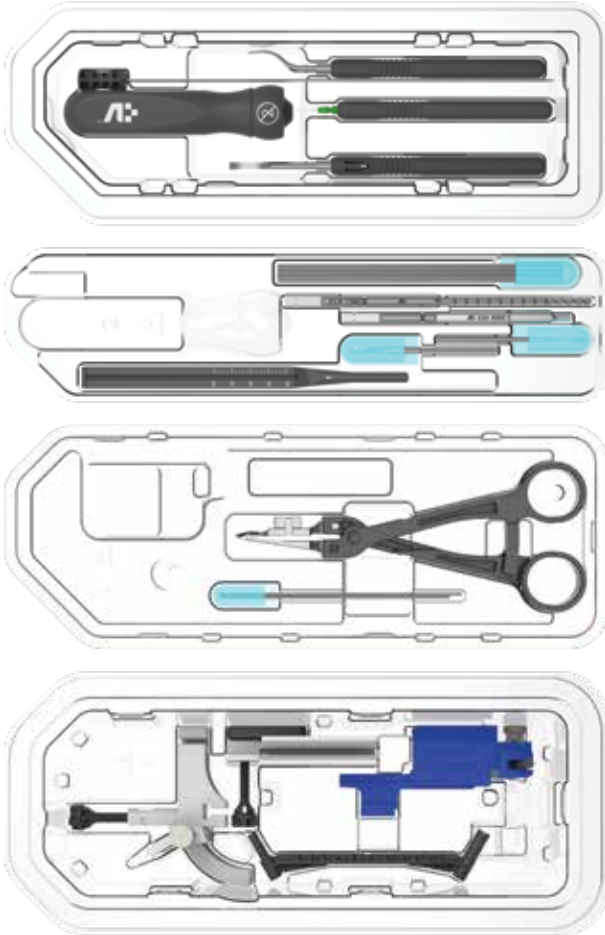
Length	Revcon™ Anchor Ø4.0mm	Qty.
46mm	RSA4046-S	2
48mm	RSA4048-S	2
50mm	RSA4050-S	4
52mm	RSA4052-S	4
54mm	RSA4054-S	4
56mm	RSA4056-S	4
58mm	RSA4058-S	2
60mm	RSA4060-S	2



Revcon™ Screw System

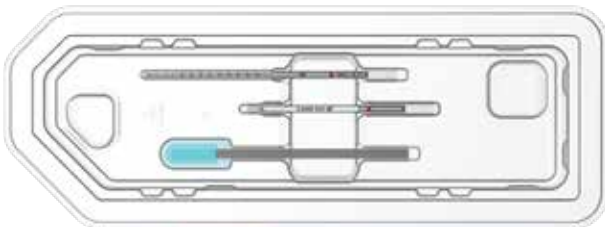
Ordering Information

Anchor Ø4.0mm



Part No.	Description	Qty.
RIK40-S	Revcon™ Instrument Kit, 4.0mm, Sterile	1
Instrument Kit Components		
	Axial Handle, Cannulated	1
	Elevator, Curved	1
	Elevator, Straight	1
	Depth Gauge	1
	Beaver Blade Assembly	1
	Drill, Cannulated, 3.0mm	1
	Hex Driver, Cannulated, 2.5mm	1
	Shannon Bur, 2.0mm x 16mm	1
	Wedge Bur, 3.1mm x 13mm	1
	Wire Pusher	1
	K-wire, 1.4mm x 127mm	6
	Guide Clamp	1
	Smooth Tip K-wires	2
	1.6mm K-wire	1
	Drill Sleeve / Tissue Protector	1
	Guide Rail / Wire Targeter Assembly	1
	Metatarsal Shifter Medial Component	1
	Metatarsal Shifter Plantar Component	1

Neutra Ø3.0mm



Part No.	Description	Qty.
RIK30-S	Revcon™ Instrument Kit, 3.0mm, Sterile	1
Instrument Kit Components		
	Hex Driver, Cannulated, 2.0mm	1
	Drill, Cannulated, 2.2mm	1
	K-wire, 0.9mm x 127mm	6



MEDICAL DEVICES

For more information contact:

+844.372.5489

info@voomdevices.com

voomdevices.com

Voom™ Medical Devices
783 Old Hickory Boulevard, Suite 155
Brentwood, TN 37207